



# Divisions of the Ice Surface

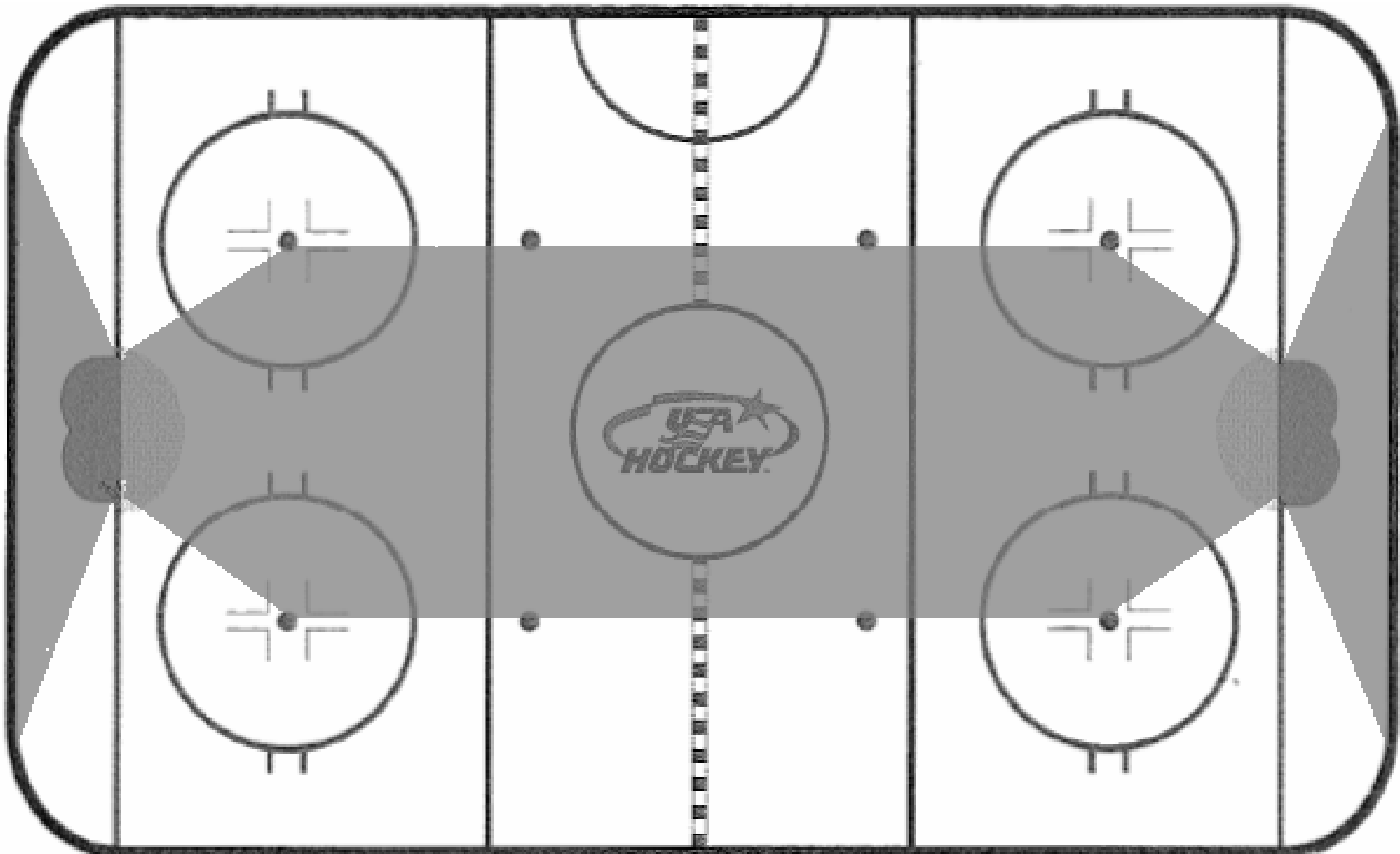
*General Membership Training*  
*November 18, 2008*

# *No Man's Land*

Ice Hockey Officials

**IHONC**

Northern Connecticut



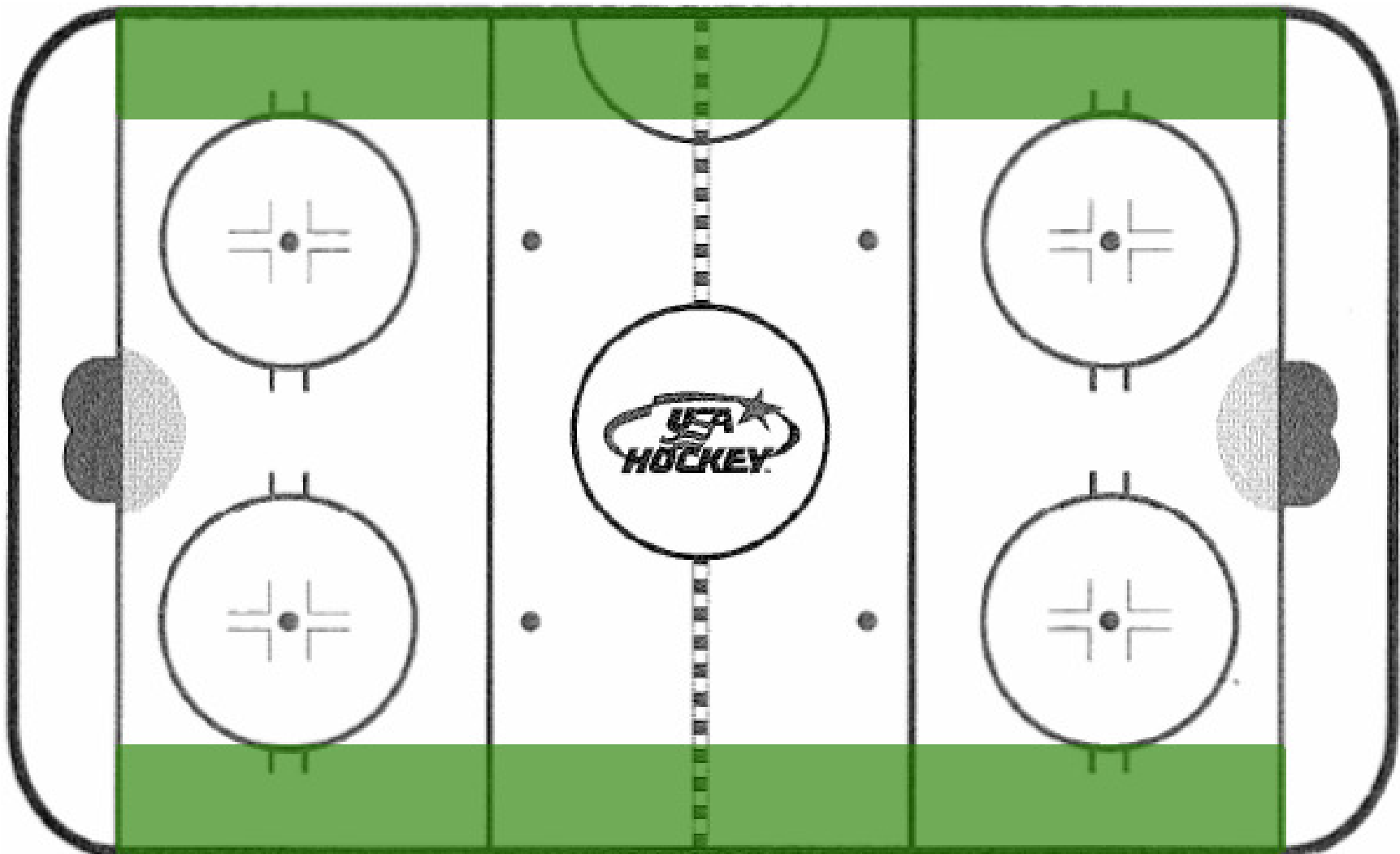
As a rule, never venture into these areas during play

# Skating Lanes

Ice Hockey Officials

**IHONC**

Northern Connecticut



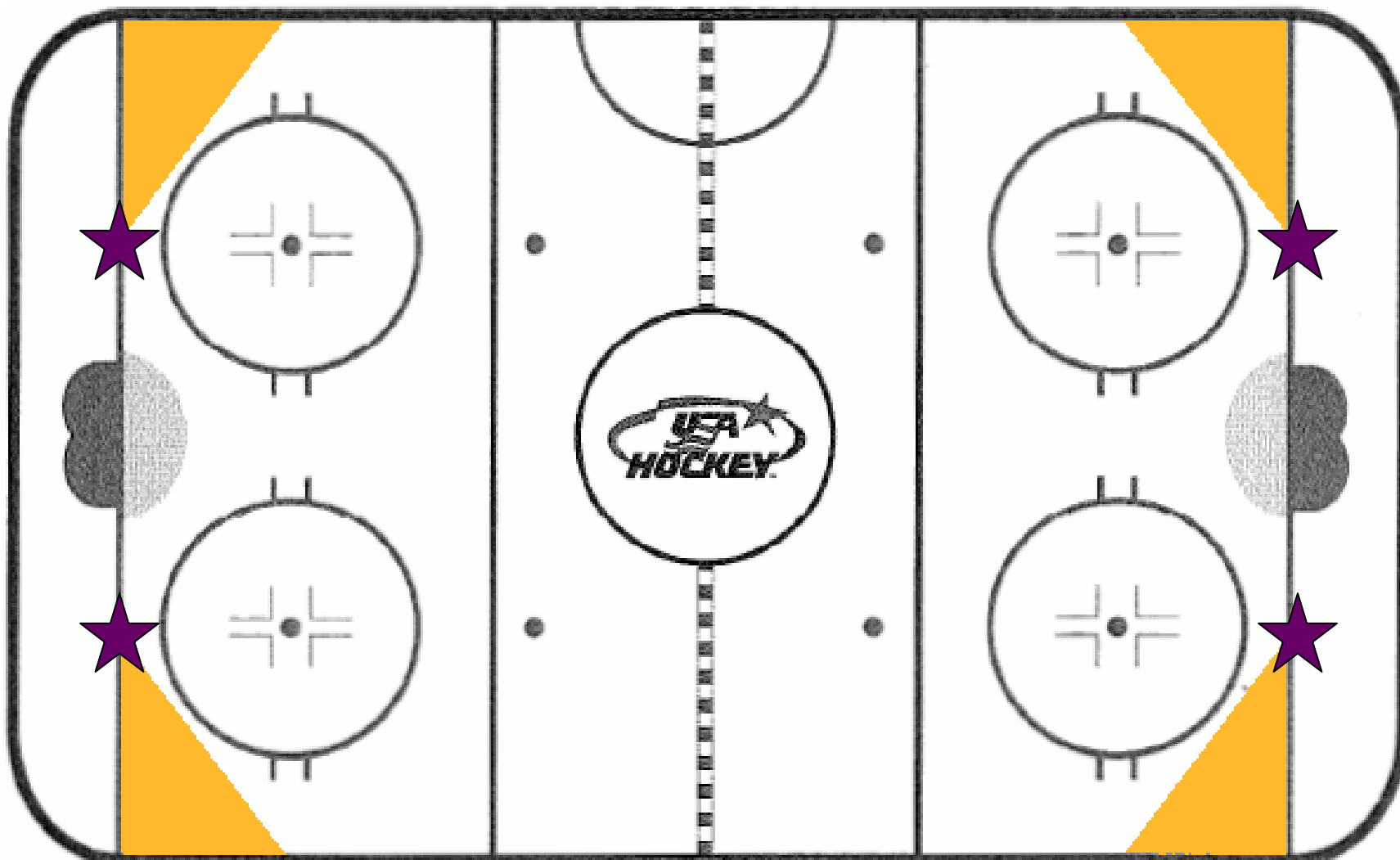
0-10 feet from the boards depending where play is

# Golden Triangle

Ice Hockey Officials

**IHONC**

Northern Connecticut



Recommended proper goal line position for deep official

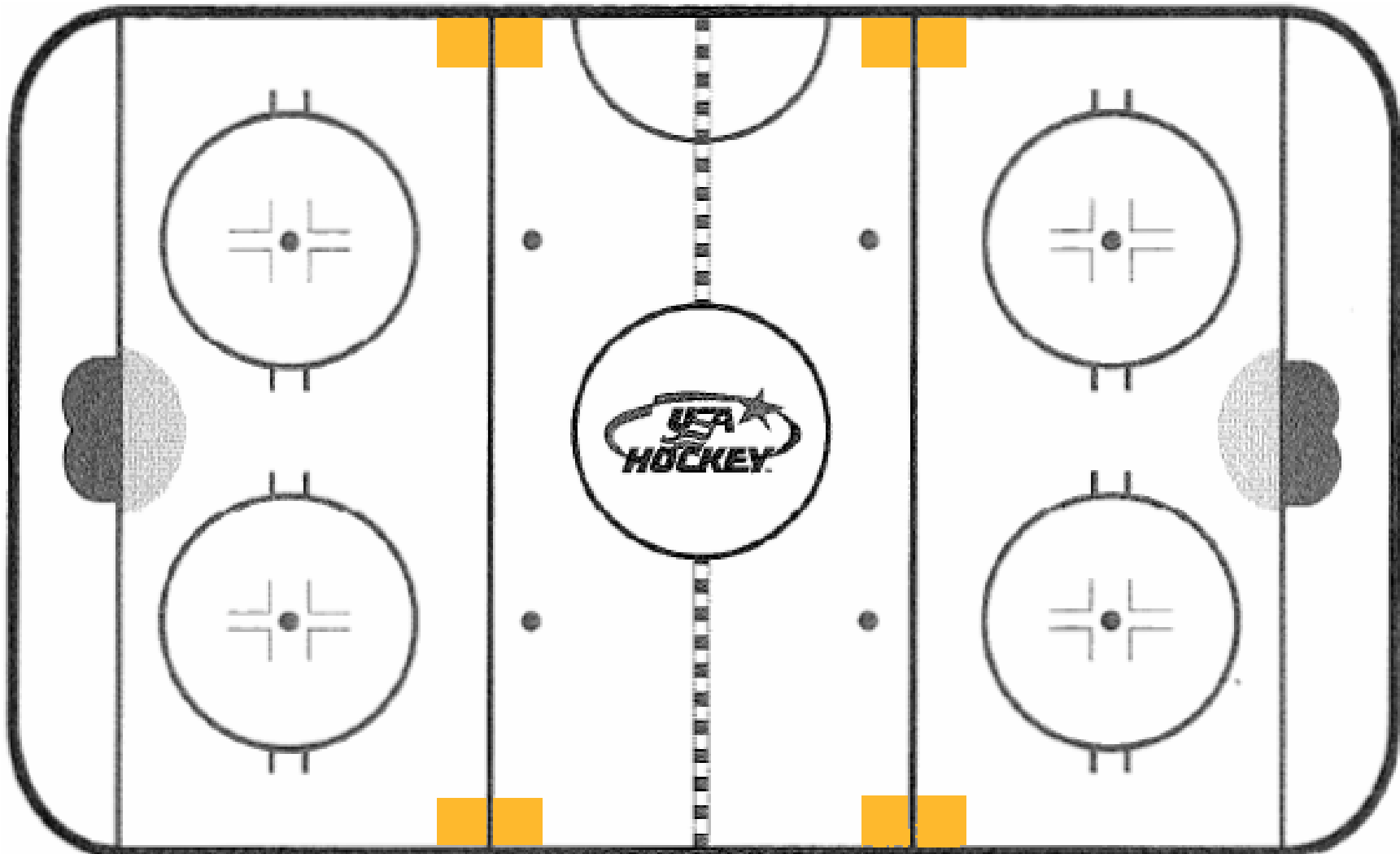
★ = "Home base" – See the Basic Manual for details

# *Golden Rectangle*

Ice Hockey Officials

**IHONC**

Northern Connecticut



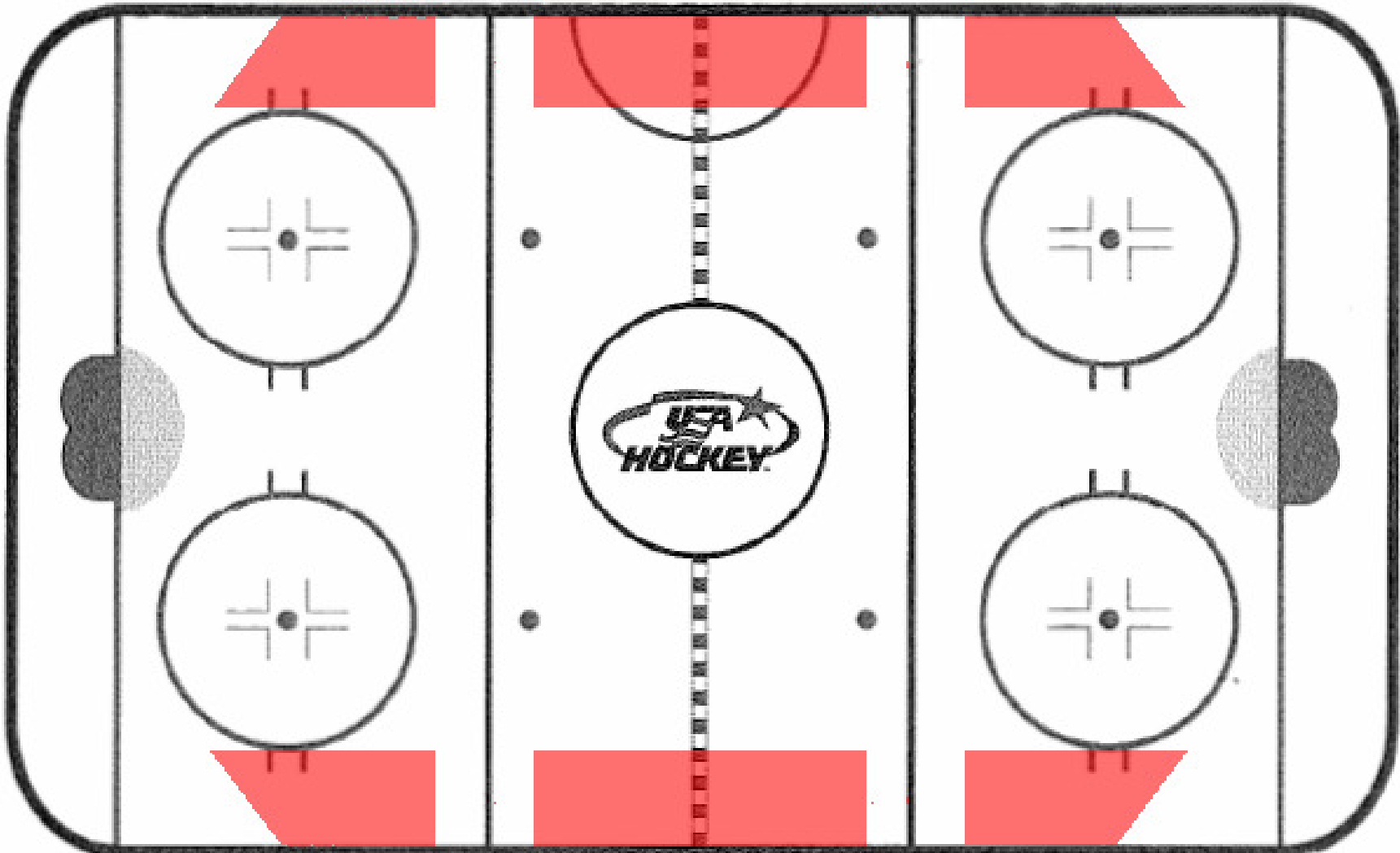
Approx 3' either side of the blue line and 3' off the boards

# *No Parking Zone*

Ice Hockey Officials

**IHONC**

Northern Connecticut



Areas that are OK to skate through but not good to stop in